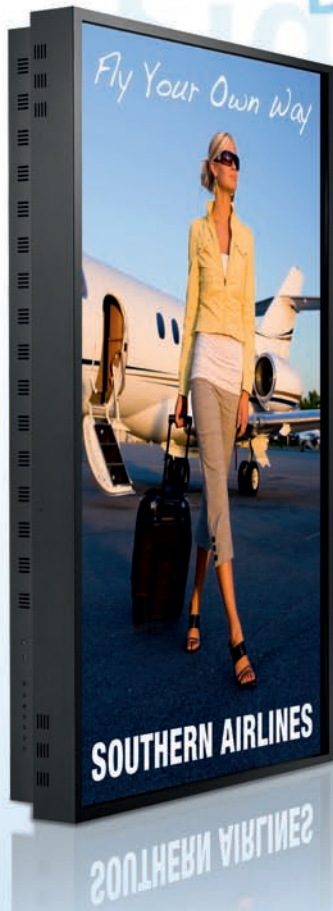


Digital Signage
 Conferencing
 Fairs & Events

Key Features

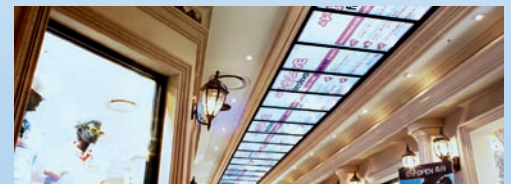
- 52" LCD TFT public display
- out-of-home media panel
- 1920 x 1080 resolution
- 1700:1 high dynamic contrast
- 600 cd/m² high brightness
- 178° (h/v) wide viewing angle
- array of connectors
- metal frame housing
- narrow bezel
- built-in video wall function
- portrait/landscape orientation
- auto cooling system
- remote control & maintenance



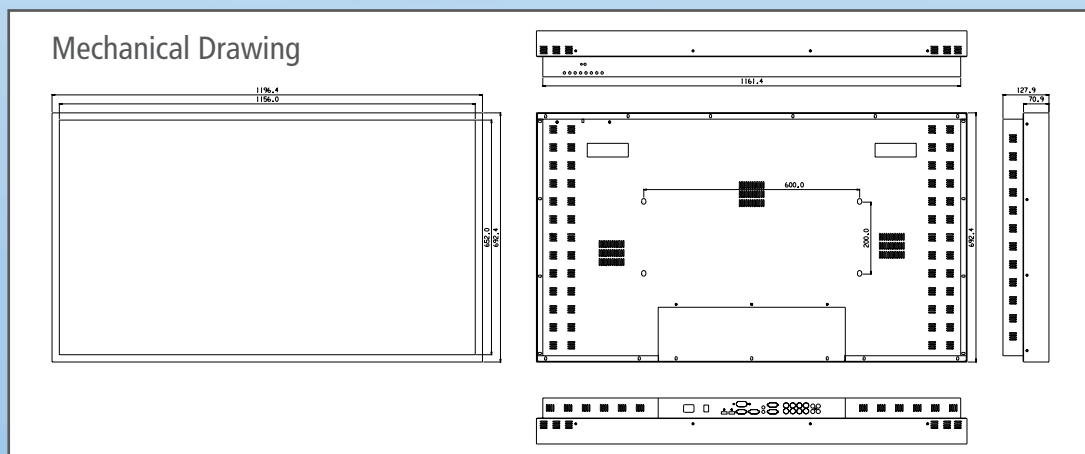
D525ML – Metal Frame Type

Since the mid-90s, the name HYUNDAI has been synonymous with the design and production of state-of-the-art display technologies. Advanced devices offering sophisticated design and supreme image quality – with "built-in" future-proofing.

By using special "Out-Of-Home" LCD panels HYUNDAI IT's indoor public displays ensure the presentation of digital signage contents in a pin sharp, high bright and brilliant picture quality. Meeting all necessary technical requirements for professional display equipment these enhanced displays ensure a reliable and failure-free operation in any kind of indoor environment.



Display Panel	Panel Technology		LCD TN TFT	
	Screen Size (inch cm)		52" 132,08	
	Active Display Area (mm)		1152 x 648	
	Number of Pixels		1920 x 1080 (WUXGA)	
	Aspect Ratio		16 : 9	
	Display Colors		16.7 Mil.	
	Brightness (cd/m²)/(typ)		600	
	Contrast Ratio		1700 : 1	
	Response Time (ms, GTG)		8	
	Viewing Angle (H/V)		178°/178°	
	Life Time		50,000h	
	Housing		black powder coated metal	
	Resolution	Monitor		1920 x 1080
DTV (without tuner)		1080p		
Connectivity & Control	Input	VGA (15pin D-Sub)		1
		HDMI		1
		Composite Component (BNC)		1 1
		Audio: PC Component Composite		1 1 1
		RS232C		1
	Output	VGA (15pin D-Sub)		1
		DVI (Connected type HDMI)		1
		Composite Component (BNC)		1 1
		RS-232C		1
		Speaker (ready)		1
	Integrated Video Wall Function (Multi-Screen)		HDMI, VGA (15pin D-Sub), Component (BNC), Composite (BNC)	
	Power Requirement	Input Voltage		100 – 240VAC
		Consumption (typ) (W)		320
Auto Cooling System		Yes (1EA)		
Auto Power Control (DPMS)		yes (optional set-up)		
Feature	Tempered Glass		Option (Model: D525MLG)	
	Touch Screen		Option (Model: D525MLI)	
Mechanical	Dimension (mm)	Set (W x H x L) (mm)		1196.4 x 692.4 x 128
		Bezel Size (U/D/L/R) (mm)		20.2 / 20.2 / 20.2 / 20.2
		Packed (W x D x H) (mm)		1424 x 890 x 295
		Wall Mounting Hole (W x H mm)		600 x 200
	Weight (kg)	Set (kg)		46,2
		Packed (kg)		53,9
Approvals	EMI/EMC Safety		FCC, CE cTUVus, TUV, CB	
Environmental Conditions	Temperature Humidity		0° – 40° 20% – 80%	
OSD Languages		10		
Accessories		Power Cord, Manual, VGA Cable, Remote Control		
Warranty		Standard: 2 years, less than 18 hours usage per day		
EAN Code		880 909374 570 4		



Technical details are subject to change without further notice. Errors excepted. Version: as of June 2009.